

# Setting Up SeaMonkey® (Based on version 1.1 for Mac and Windows)

**Note:** SeaMonkey is an integrated application that includes the browser, email client, Web authoring tool and chatting. It is the successor to Mozilla, and offers much of what used to be in Netscape before that application was scaled down to include just the browser. This manual covers both Mac OS X and Windows. The directions are essentially the same, with minor differences in the way dialog boxes are labeled and used.

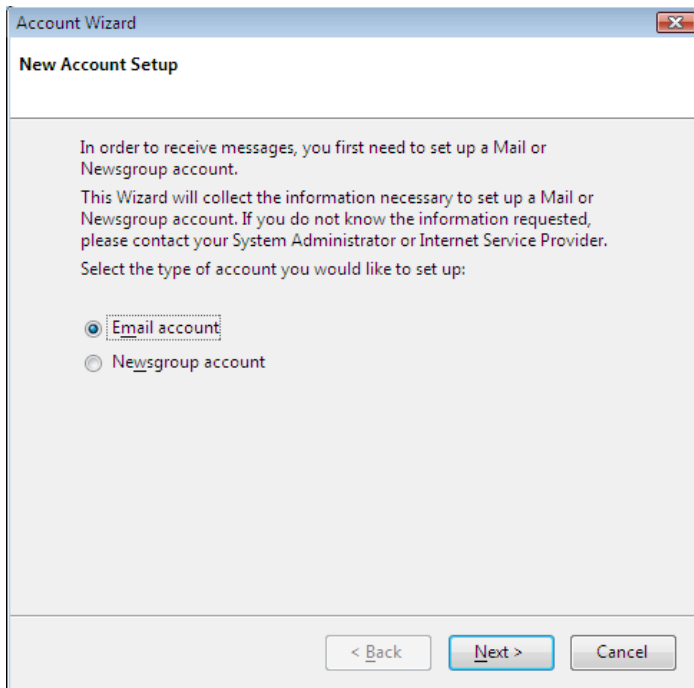
## Setting Up SeaMonkey Mail

1. To set up your mail account, open SeaMonkey's **Mail & News** feature from the Window menu.
2. Select **File / New / Account**, which will open the New Account Wizard.

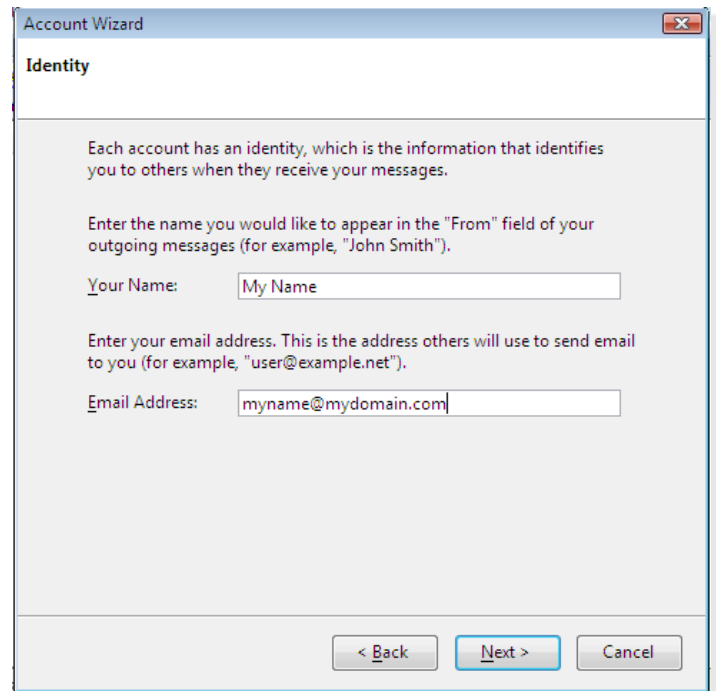
**Note:** The first time you open **Mail & News**, a Local Folders—Sea Monkey folder will open, and you will be able to click Create a new account to begin the setup process.

3. Select **Add Account** button, which will open the Account Wizard.

To continue the setup process, navigate through the following windows in the setup wizard:

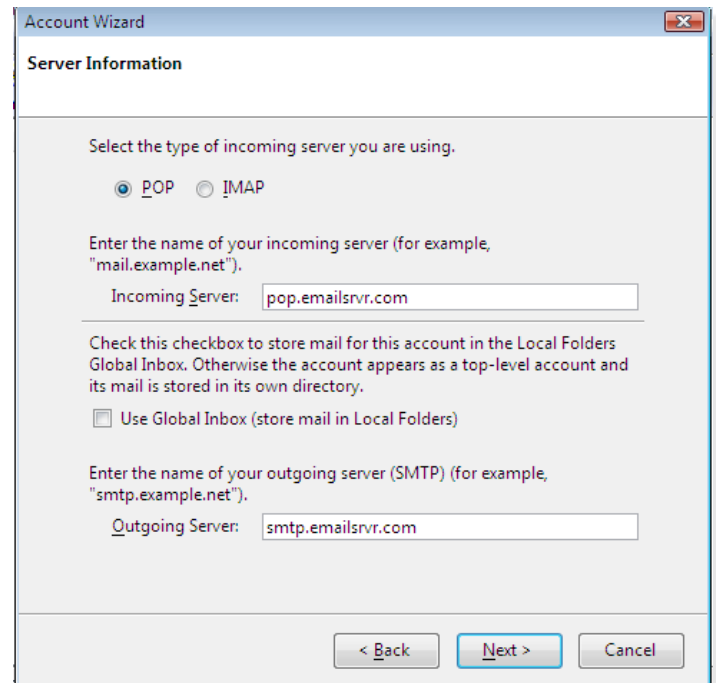


4. In the **New Account Setup** window, click the **Email account** button and click **Next** to continue (you can always click **Back** to recheck your entries). On a Mac, these buttons are indicated by left and right arrows.
5. In the **Identity** window, enter the following:
  - Your Name—Enter your real name or the company name.



- Email Address—Enter the address from which your email will come, such as *myname@mydomain.com*.
6. In the **Server Information** window, enter the following:
    - Select the **POP** checkbox as the type of server.
    - Incoming Server—Enter *pop.emailsrvr.com* as your incoming server.

**Note:** If you have several email accounts and want all your



messages to go into a single Inbox, check Use Global Inbox. Otherwise, you can leave this setting unchecked.

If an **Outgoing Server** box appears, enter, under **SMTP server**: *smtp.emailsrvr.com*. If you have already configured an outgoing server for a previous account, this dialog will be bypassed.

**Note:** If the **Outgoing Server** field is not displayed, there will be a default server listed, one you've previously established, which SeaMonkey will use instead.

7. In the **User Names** window, do the following:

- Incoming User Name—Enter your username, such as *myname@mydomain.com*.
- Outgoing User Name—Repeat your username, such as *myname@mydomain.com*, which is required for the server to authenticate your account when sending messages.

8. In the **Account Name** window, enter a descriptive name for your email account, such as **Work Account**, **Home Account**, or something similar.

9. The **Congratulations** window will display all the settings you've entered. Please review everything to make sure it's correct. To make any changes, click the **Back** button to review previous settings and correct the settings as needed. The **Download messages now** checkbox, selected by default, will retrieve your messages when you complete the setup process.

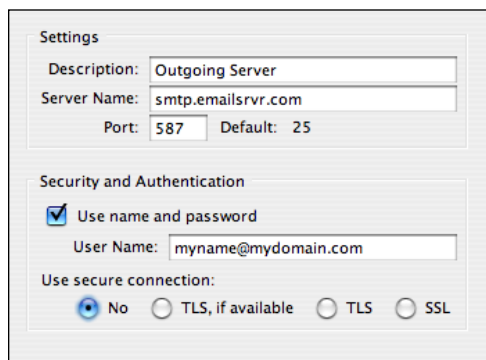
10. Click the **Finish** to store your settings.

## Changing Outgoing (SMTP) Servers

If you experience trouble sending mail, it is likely that your ISP is blocking the default Port 25; this is a very common process that's designed to protect the service from spammers. To fix this problem, follow these steps:

1. Select **Edit / Mail & Newsgroup Account Settings**.
2. Click the **Outgoing Server (SMTP)** link, select your account and press **Edit**. Enter port number 587.

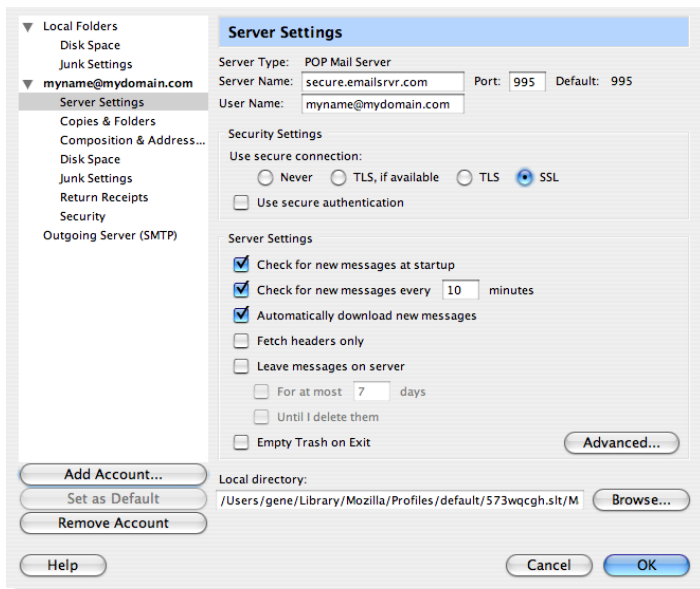
## Assigning SSL Secure Server Settings



The SSL protocol allows you to send and receive secure mail messages to and from your email server. The setting, though, doesn't apply to your messages once they leave the email server.

1. To send messages over a secure connection, select **Edit / Mail & Newsgroup Account Settings**.
2. Select and expand your mail account, located in the left sidebar pane.

3. Click the **Server Settings** link.
4. Check the **Use secure connection (SSL)** box.
5. Take note of the server type displayed in the **Server Type** area. Enter the secure server name, *secure.emailsrvr.com* and confirm the default port number is 995.
6. Click the **Outgoing Server (SMTP)** link, located in the left sidebar pane.
7. In the **Use secure connection** section of the dialog box, click the **SSL** button.



8. Enter the secure server name, *secure.emailsrvr.com*.
9. Confirm the default port number, which may be either 465 or 587.
10. Be sure that the **Use name and password box** is checked and that your email address appears in the **User Name** box.
11. Click the **OK** button to complete the setup process.

**Note:** Some ISPs do not allow their customers to use third-party SMTP servers. If you encounter this problem, you will need to use the ISP's outgoing servers instead for the messages you send.

## Leaving a Copy of Messages on the Server

1. To leave a copy of messages on the server, select **Edit / Mail & Newsgroup Account Settings**.
2. Select and expand your POP mail account, located in the left sidebar pane.
3. Click the **Server Settings** link.
4. Check the **Leave messages on server** box.
5. To avoid exceeding your account's storage limits, indicate whether the server should delete messages after a certain number of days, or if the server should delete messages when you manually delete or move them from the Inbox.
6. Click the **OK** button to complete the setup process.